

CEREMONY OF DARKNESS AND LIGHT

TROMBONE1

JTNG 2012

JENS JEFSEN

INTRO

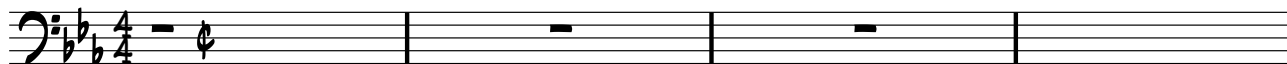
ALLA BREVE $\text{♩} = 128$

Ebmaj7

C7

F7

Bb7



Ebmaj7

C7

F7

Bb7

5



Ebmaj7

C7

F7

Bb7

9

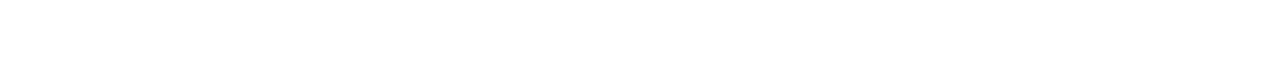
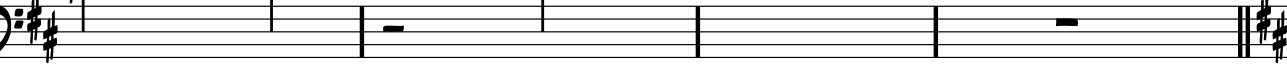
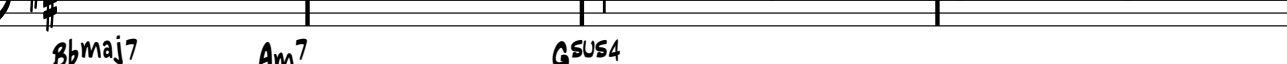
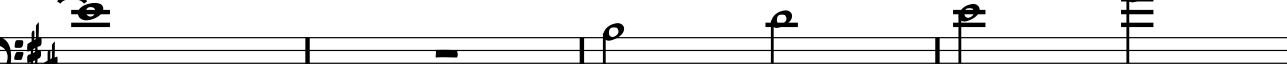
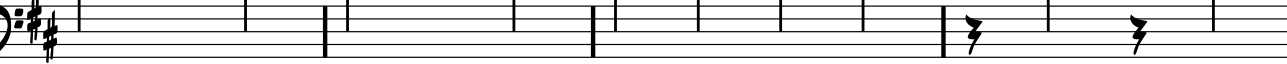
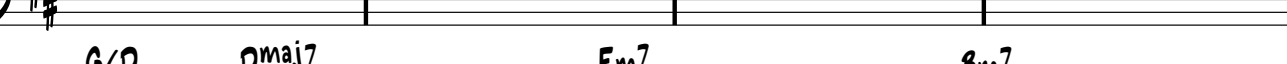
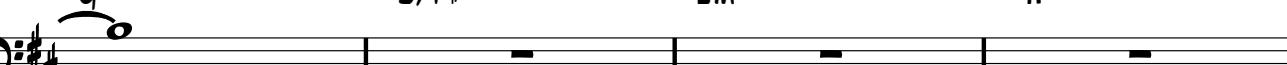
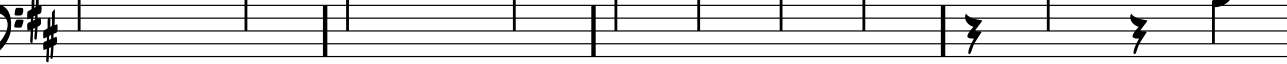
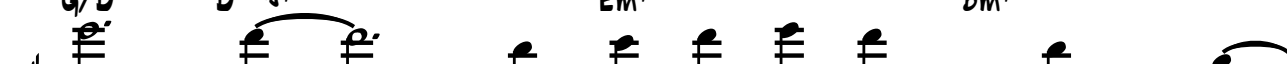
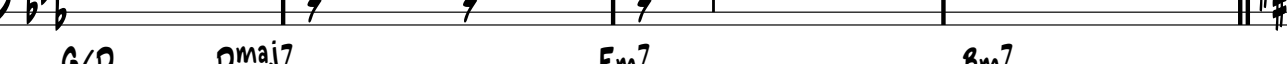
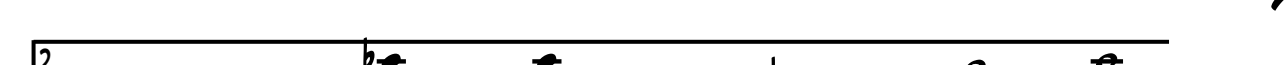
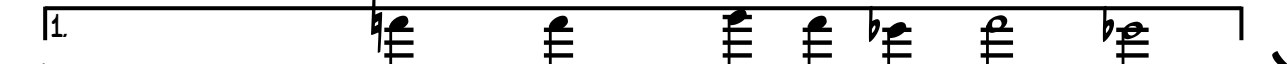


13

VAMP CONT



17



G/D

Dmaj7

Em7

Bm7

Gmaj7

D/F#

Em7

A7(sus4)

G/D

Dmaj7

Em7

Bm7

Fmaj7

Em7

A7

Bbmaj7

Am7

G(sus4)

CEREMONY OF DARKNESS AND LIGHT - TBN1 P2

C E(add9) SAME TOP CHORD E(add9)/F#

1. E(add9)/G# E(add9)/A

B F#/Bb B/A E/Ab

G(add9) E(add9)

RITARD ON ENDING FINE D.C. CON REP

2. E(add9)/G# E(add9)/A

SOLO: A1-A2-B

OUT: D.S. A1-A2-B-C- AL FINE