

KONTRABAS

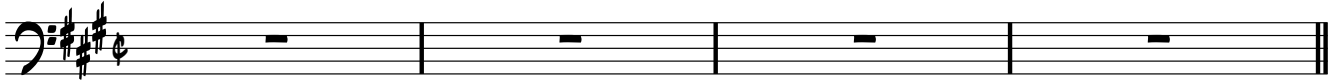
TAKE SOMEONE'S HAND

BALLAD $\text{♩} = 65$

JENS JEFSEN

INTRO

A Δ (#11)



5 **A1** A Δ (#11) Dm7 C Δ Bb Δ Ab Δ

9 G Δ (#11) Cm7 Bb Δ Ab Δ Gb Δ

13 F6add9 Eb Δ Am7(b5) Abm7 Ebadd9/G

17 F#(11) Fm9 Fm(maj7) F#m7/B

21 **A2** A Δ (#11) Dm7 C Δ Bb Δ Ab Δ

25 G Δ (#11) Cm7 Bb Δ Ab Δ Gb Δ

29 Eb Δ (#5) Eb6 B Δ G Δ

33 Fm7 F#m7/B

35 **A1** A Δ (#11) Dm7 C Δ Bb Δ Ab Δ

SHORT BASSOLO

TAKE SOMEONE'S HAND -JJNG-KBAS P.2

39 $G\Delta(\sharp 11)$ Cm^7 $Bb\Delta$ $Ab\Delta$ $Gb\Delta$

43 $F6add9$ $Eb\Delta$ $Am^7(\flat 5)$ $Abmi^7$ $Ebadd9/G$

UNISON BASSLINE TRIPLETS ARE TRIPLETS, 8THS ARE EVEN

47 $F\sharp(\sharp 11)$ Fm^9 Fm^{maj7} $F\sharp m^7/B$

A2 51 $A\Delta(\sharp 11)$ Dm^7 $C\Delta$ $Bb\Delta$ $Ab\Delta$

55 $G\Delta(\sharp 11)$ Cm^7 $Bb\Delta$ $Ab\Delta$ $Gb\Delta$

59 $Eb\Delta(\sharp 5)$ Eb^b $B\Delta$ $G\Delta$

63 Fm^7 $F\sharp m^7/B$ $Ab\Delta$ $Gb\Delta$ $Eb\Delta(\sharp 5)$

SOLO FORM: A1 -A2 OUT: GO D.S. AL CODA

RITARD